

ELITE  
 SPRING GEAR  
 TAILDRAGGER SHOWN

Man #	Description	Part #	Req.
1	SPRING GEAR	SG-1	1L 1R
2	SADDLE	SG-2	4
3	TOP PLATE	SG-3	2
4	BOTTOM PLATE	SG-4	2
5	SPACER BLOCK	SG-5	2
6	PLASTIC GEAR LEG FAIRING	SG-6	2
7	FLOOR DOUBLER	FUS-430	1
8	FLOOR DOUBLER	FUS-431	1
9	5/16" PENNY WASHER	AN970-5	4
10	7/16" x 1 7/8" CRUSH TUBES	SG-10	4
11	3/8" BOLT	AN6-44A	2
12	3/8" WASHER	AN960-616	4
13	3/8" NUT	AN365-624	2
14	5/16" BOLT	AN5-43A	4
15	AXLE	SG-11	2
16	1/4" BOLT	AN4-17A	8
17	1/4" NUT	AN365-428	8
18	1/4" WASHER	AN960-416	8
19	FLOOR DOUBLER	FUS-429	1
20	FLOOR DOUBLER	FUS-428	1
21	3/16" X 3/4" AVEX RIVET	RV 1631	8
22	5/16" NUT	AN365-524	4

## Spring Gear Assembly

**NOTE:** The following instructions are for the Taildragger version of the Elite. The Trike version install is the same except that they are mounted farther back and the Spring Gear legs are called out as SG-01A L & R.

### 10.1 Crush Tube Install

- 1) Drill the four outboard 5/16" holes through the top surface only of FUS-5 out to 7/16". Figure 10.1.1.

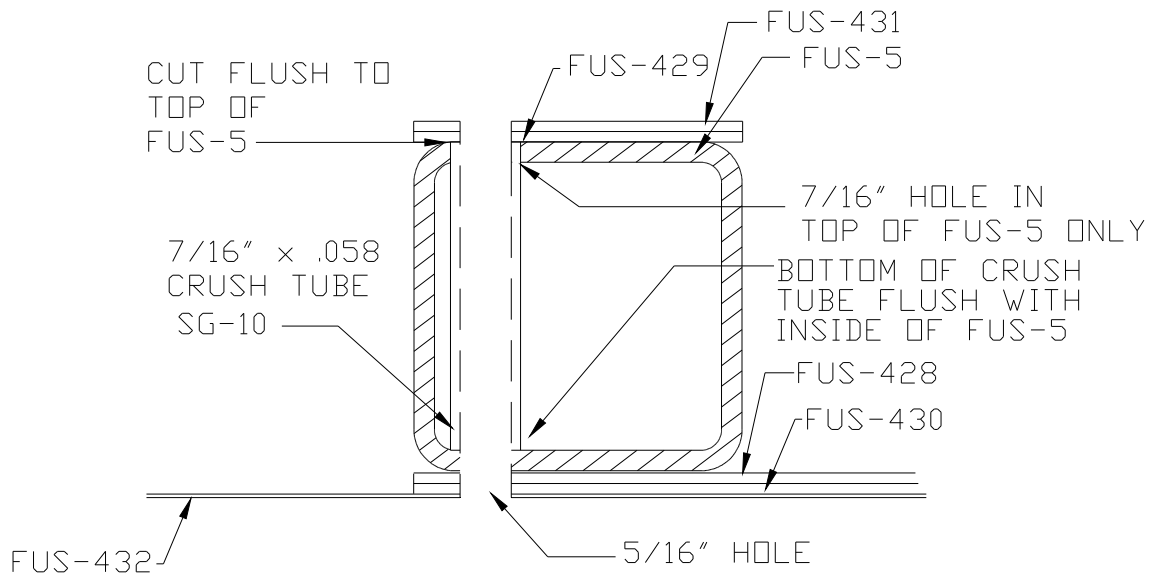


Fig.10.1.1

- 2) Insert the SG-10 and mark it for trimming.
- 3) Make four crush tubes. File and debur all the parts.

### 10.2 Saddles

- 1) Gather the four SG-2 Saddles, two SG-3 Top Spacer Plates and two SG-4 Bottom Plates.
- 2) Clamp two sets of SG-2 Saddles together. Use 1/4" bolts for alignment while clamping. Remove the 1/4" bolts and drill the holes out to 5/16". Unclamp and debur. Figure 10.2.1.

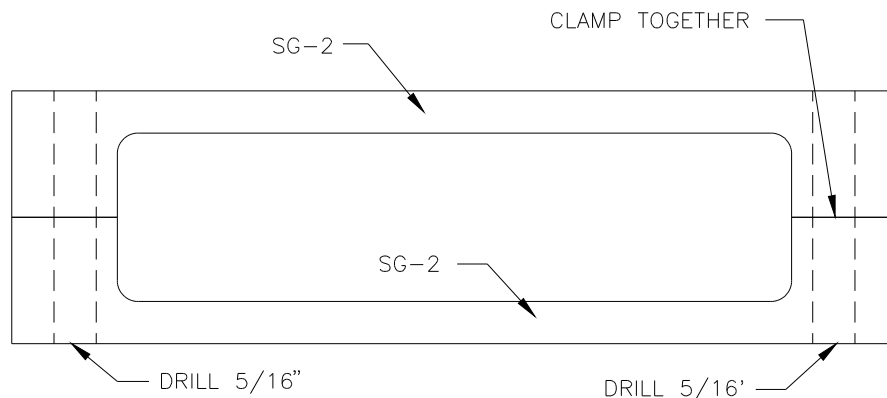


Figure 10.2.1

- 3) Bolt the SG-2 assemblies into place using the two outboard 5/16” holes that run through the FUS-5 Carrythrough. Figure 10.2.2. **NOTE:** Make sure you have a crush tube in place before installing the saddles.
- 4) Leave the bolts slightly loose so the SG-1 Spring Gear can be slid into place. Figure 10.2.2. **NOTE:** FUS-5 Carrythrough not shown for clarity.

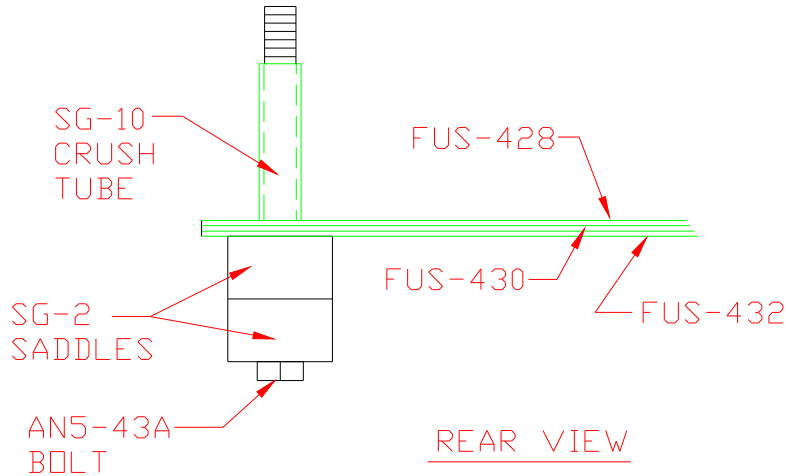


Figure 10.2.2

### 10.3 Plate Install

- 1) Layout and drill a pair of SG-4 Plates and a pair of SG-3 Plates as per figure 10.3.1.

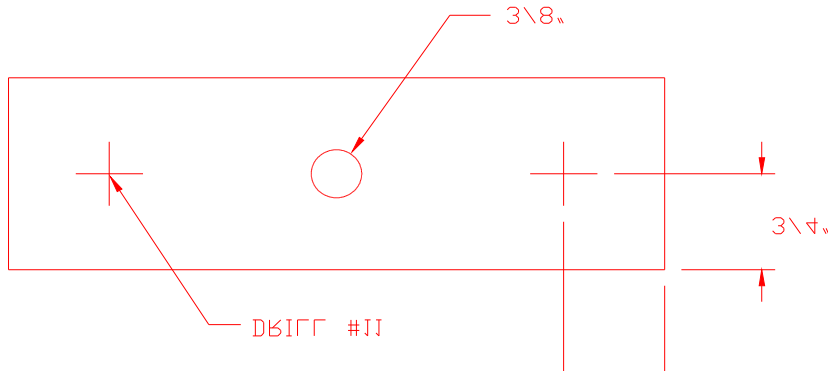


Figure 10.3.1

- 2) Use an AN6-44A bolt to position a SG-3 Top Plate and a SG-4 Bottom Plate. Position them 90° to the FUS-5 Carrythrough. Drill the #11 holes through the Skins, Doublers and one side of the Carrythrough. Figure 10.3.2.

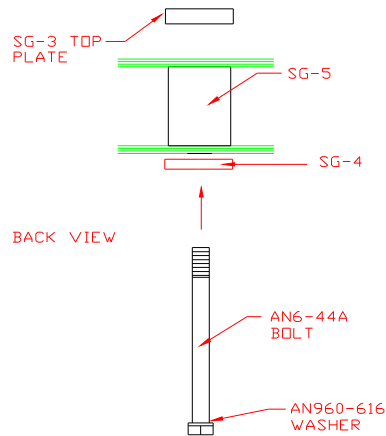


Figure 10.3.2

- 3) Disassemble, debur, chromate all mating surfaces and rivet the plates into place. Use 3/16” avex rivets (RV-1631).

### 10.4 Gear Legs

- 1) Slide the Spring Gear legs into position. Install the AN6-44A bolts. Tighten the nuts. Figure 10.4.1.
- 2) Tighten the AN5-43A bolts. **NOTE:** The 5/16” bolts have penny washers (AN970-5) under the nuts (inside of the aircraft).

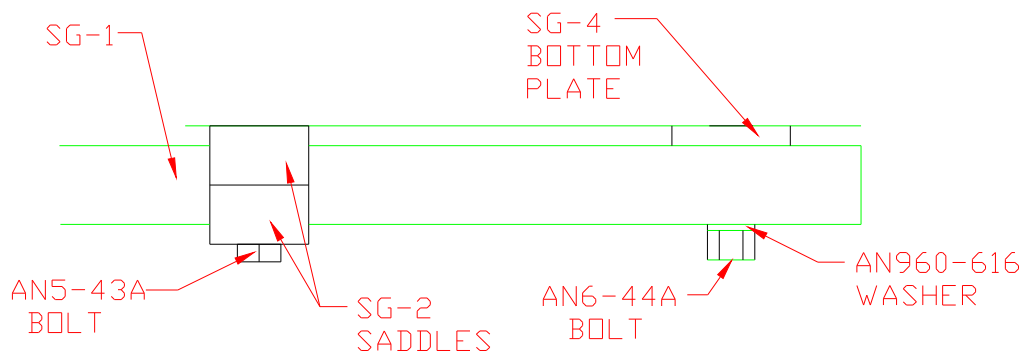


Figure 10.4.1

## 10.5 Fairing Covers

- 1) Take a plastic Fairing Cover (SG-6) and place it over the top of one of the Spring Gear legs. Adjust so it sits snug against the bottom of the aircraft.
- 2) With a #40 drill, (maintaining a 5/16" edge distance on the Fairing), drill nine holes through the Fairing into the Skin. Space the holes so that the Fairing is properly supported.
- 3) Attach the Fairing to the aircraft using nine #6 Pan Head screws with nine #8 washers (AN960-8) under the heads.